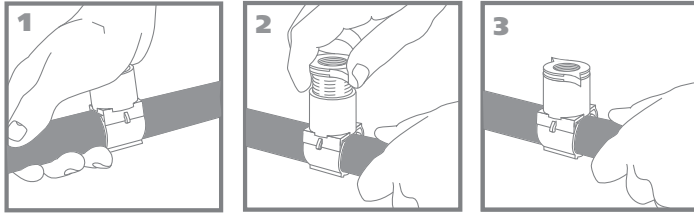


Blazing Saddle™

INSTALL. FASTER.

BLAZING™
BLAZING PRODUCTS BY TOM KING

THE LEADER IN SELF-TAPPING FITTINGS.



"We have seen a decrease in fitting installation time by **more than 50%** when using the Blazing Saddle as opposed to the traditional saddle or fitting."

Tim B. - Mt. Pleasant, MI

"We believe it is the **most time-saving product** in the irrigation industry, and we have tried them all."

Matt D. - Wichita, KS

"The design makes for a very fast installation **with no leaks.**"

Dave D. - Aurora, CO

10 SECOND INSTALLATION

No Tools • No Clamps • No Coring
No Drilling • No Sawing • No Gluing
No Hassles • No Leaks

Leading the industry's labor-saving products.
Eliminate digging. 10 seconds to tap pipe.
For polyethylene pipe or Class 200 PVC pipe.

Now for 3/4" through 1 1/2" pipe -
Now all sizes with 1/2" or 3/4" female threads
or built-in swing pipe barb.

No tools required. No clamps or coring.
Lab-certified water flow for rotors and sprays.
Withstands freezing. Never slips.
Withstands over 900 psi without leaking.

Proven, time-tested, guaranteed.



www.BlazingProducts.com

Blazing Saddle™

INSTALL. FASTER.

BLAZING
BLAZING PRODUCTS BY TOM KING

- Withstands freezing
- Durable construction - proven clamp design trusted by professionals for years
- No tools required
- Tested to over 1 million on/off cycles without a leak
- Withstands ground shifting - never slips
- Withstands over 900 psi on PVC and 400 psi on polyethylene without a leak

Flow Tests:

On Polyethylene (80#):

Friction loss equivalent to only 3.8 ft of plain pipe - **41.5% less** flow restriction than a standard insert fitting

On PVC (Class 200):

Friction loss equivalent to less than 3 ft of plain pipe

Tested on 1" pipe by the Center for Irrigation Technology, California State University, Fresno.

3/4" Polyethylene

BS 4000	Swing Pipe Barb
BS 5000	1/2" FPT
BS 6000	3/4" FPT

1" Polyethylene

BS 7000	1/2" FPT
BS 8000	3/4" FPT
BS 9000	Swing Pipe Barb

1 1/4" Polyethylene

BS 12500	1/2" FPT
BS 12750	3/4" FPT
BS 12900	Swing Pipe Barb

1 1/2" Polyethylene

BS 15500	1/2" FPT
BS 15750	3/4" FPT
BS 15900	Swing Pipe Barb

25mm Metric Polyethylene

BS 2550	1/2" FPT
BS 2575	3/4" FPT
BS 2590	Swing Pipe Barb

33mm Metric Polyethylene

BS 3350	1/2" FPT
BS 3375	3/4" FPT
BS 3390	Swing Pipe Barb

3/4" PVC (Class 160 & 200)

BS 4PVC	Swing Pipe Barb
BS 5PVC	1/2" FPT
BS 6PVC	3/4" FPT

1" PVC (Class 160 & 200)

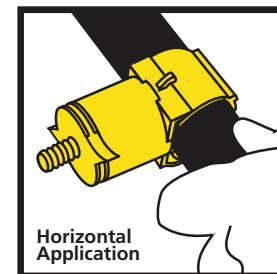
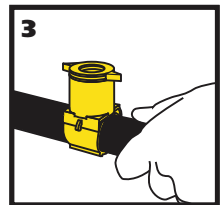
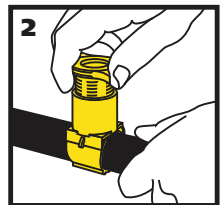
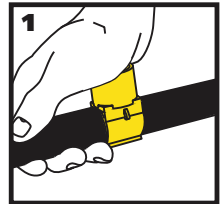
BS 7PVC	1/2" FPT
BS 8PVC	3/4" FPT
BS 9PVC	Swing Pipe Barb

1 1/4" PVC (Class 160 & 200)

BS 1250P	1/2" FPT
BS 1275P	3/4" FPT
BS 1290P	Swing Pipe Barb

1 1/2" PVC (Class 160 & 200)

BS 1550P	1/2" FPT
BS 1575P	3/4" FPT



As featured in
Popular Mechanics®